

# 6-1/4" Hook Wall Packer Specifications

Element: 10" long 70A Durometer SBR Rubber

Packer OD: 5-7/8"

Coupling: 4-1/2" 8RD LTC

Hole Size: 6" through 6-1/2"

Packer ID: 4.826"

Drift ID: 4.701"

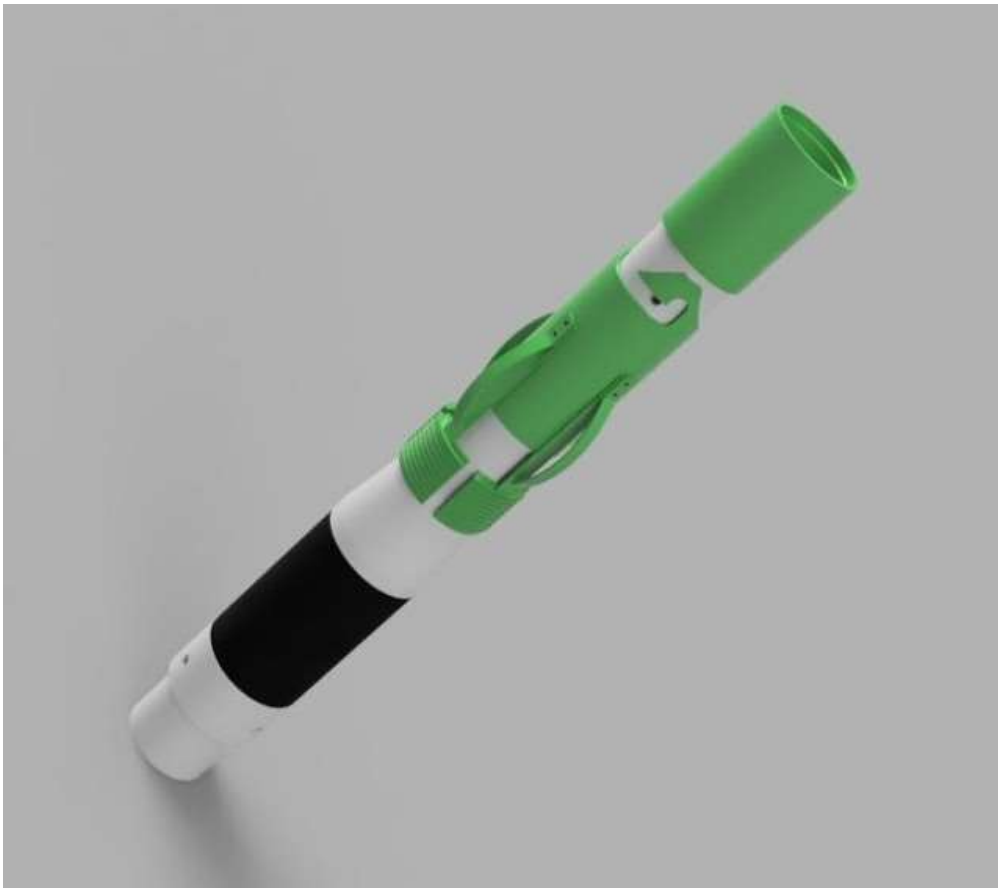
Orientation: Compression Set (Element at top of packer)

## Setting:

- Ensure element is oriented at top of packer
- Lower to desired depth
- Pull up 1 foot
- Rotate 1/2 turn left
- Slack off pipe to set slips and packer element

## Releasing:

- Pull packer out of hole



4-1/2" 13.5# Csg	
Hole Size	Min Set Depth
6"	160'
6-1/8"	235'
6-1/4"	305'
6-3/8"	380'
6-1/2"	455'

4-1/2" 11.6# Csg	
Hole Size	Min Set Depth
6"	175'
6-1/8"	265'
6-1/4"	340'
6-3/8"	430'
6-1/2"	520'

3-1/2" 9.2# Tbg	
Hole Size	Min Set Depth
6"	215'
6-1/8"	315'
6-1/4"	425'
6-3/8"	530'
6-1/2"	650'